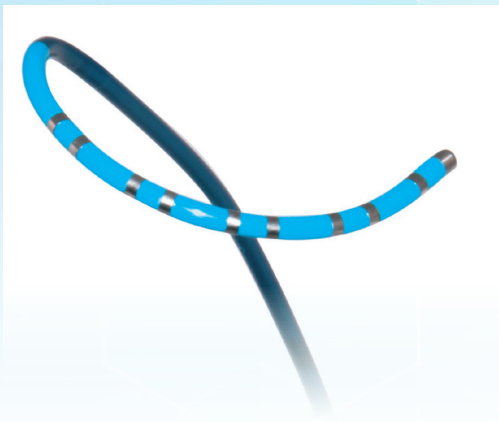


3D Curve for
Improved Access

APT-EP Map-iT[®] CS-Reach[™] Diagnostic Catheters



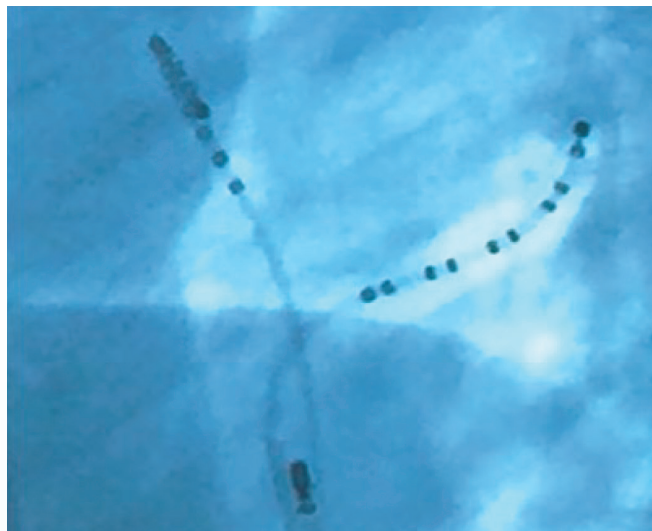
KEY FEATURES



- > Three-dimensional curve for improved access to CS from either the superior or inferior approach
- > Multi-plane curve allows 90° approach to the CS os
- > Designed to permit improved passage through challenging coronary sinus anatomy: CS os displacement, Thebesian valve, Chiari network

CATHETER SPECIFICATIONS

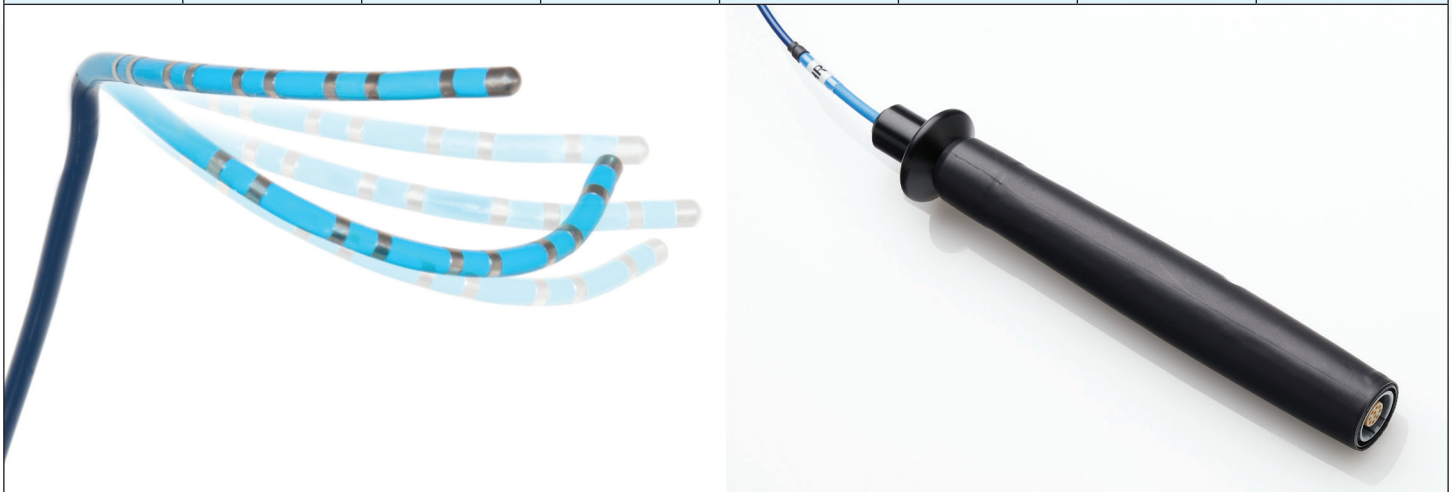
- > **French Size:** 5F or 6F
- > **Length:** 110cm
- > **Electrodes:** 10
- > **Electrode Spacing:**
2-5-2mm, 2-8-2mm
- > **Curve Type:** MPD-SL Curve
- > **Deflection:** Multi-plane



APT EP MAP-IT® CS-REACH™ DIAGNOSTIC CATHETERS

APT EP Map-iT® CS-Reach™ 5F Decapolar Steerable Electrophysiology Catheter

Reference Number	French	Electrodes	Electrode Spacing (mm)	Ring Electrode (mm)	Tip Electrode (mm)	Curve	Useable Length (cm)
901707	5Fr	10	2-5-2	1	2	MPD-SL	110
901708	5Fr	10	2-8-2	1	2	MPD-SL	110



APT EP Map-iT® CS-Reach™ 6F Decapolar Steerable Electrophysiology Catheter

Reference Number	French	Electrodes	Electrode Spacing (mm)	Ring Electrode (mm)	Tip Electrode (mm)	Curve	Useable Length (cm)
901717	6Fr	10	2-5-2	1	2	MPD-SL	110
901718	6Fr	10	2-8-2	1	2	MPD-SL	110