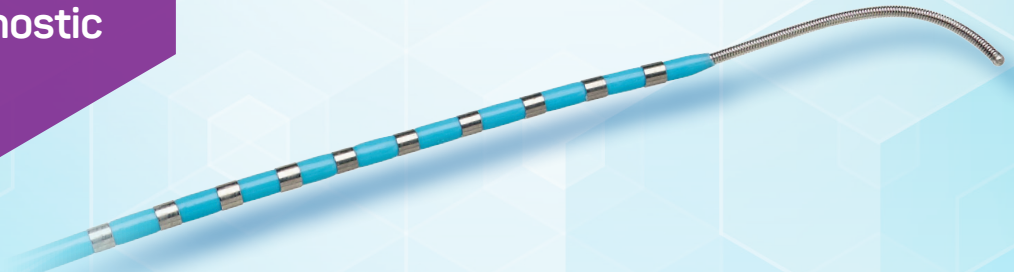
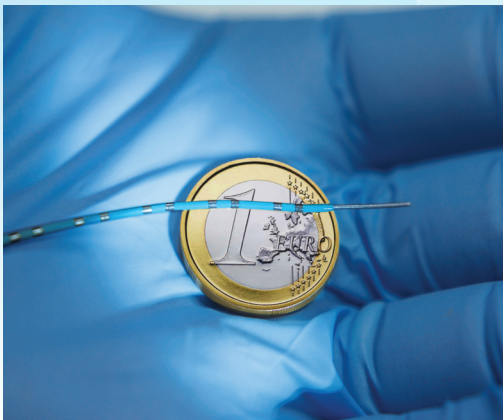


APT-EP Map-iT[®] Guide-Tip[™] 4/3.3F Diagnostic Catheters

Small Size,
Greater Diagnostic
Insight



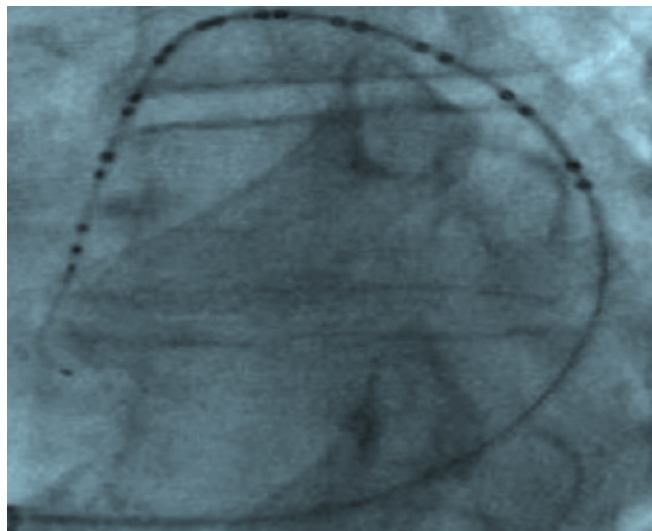
KEY FEATURES



- > Cannulate deep into the CS and its side branches to map ventricular arrhythmias
- > Ideal for left-sided WPW cases to more precisely locate the site of the accessory pathway
- > Provides mapping within the middle cardiac vein (MCV) for posteroseptal pathways
- > Ideal for Vein of Marshall mapping for inferior left atrial pathways

CATHETER SPECIFICATIONS

- > **French Size:** 4/3.3F
- > **Guidewire Tip:** 15mm/.026"
- > **Length:** 120cm
- > **Electrodes:** 10 & 20
- > **Electrode Spacing:**
2-2-2mm, 5-5-5mm, 2-5-2mm,
2-8-2mm & 2-10-2mm
- > **Curve Type:** S (straight)



APT EP MAP-IT® GUIDE-TIP™ 4/3.3F DIAGNOSTIC CATHETERS

APT EP Map-iT® 4/3.3F Decapolar Fixed Curve Electrophysiology Catheter

Reference Number	Electrodes	Electrode Spacing (mm)	Ring Electrode (mm)	Tip	Curve	Useable Length (cm)
903226	10	2-2-2	1	.026" Guidewire	Straight	120
903219	10	2-5-2	1	.026" Guidewire	Straight	120
903215	10	2-8-2	1	.026" Guidewire	Straight	120
903217	10	5-5-5	1	.026" Guidewire	Straight	120
903221	10	2-10-2	1	.026" Guidewire	Straight	120

Connection Cable: Reference number 901957



APT EP Map-iT® 4/3.3F Duo-Decapolar Fixed Curve Electrophysiology Catheter

Reference Number	Electrodes	Electrode Spacing (mm)	Ring Electrode (mm)	Tip	Curve	Useable Length (cm)
903269	20	2-2-2	1	.026" Guidewire	Straight	120
903273	20	2-5-2	1	.026" Guidewire	Straight	120
903256	20	2-8-2	1	.026" Guidewire	Straight	120
903271	20	5-5-5	1	.026" Guidewire	Straight	120
903257	20	2-10-2	1	.026" Guidewire	Straight	120

Connection Cable: Reference number 901957 2 cables required