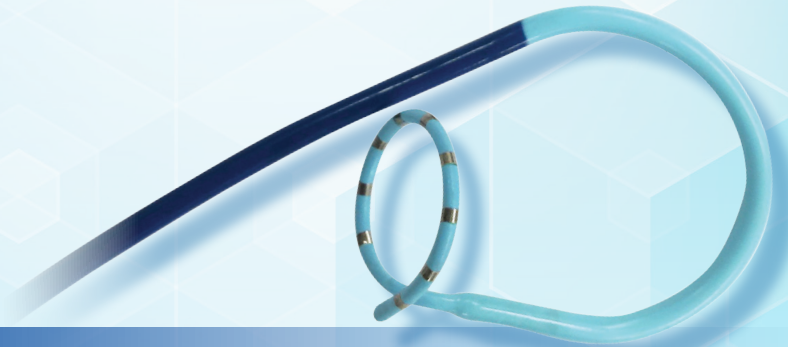


## APT-EP Map-iT® PV Diagnostic Catheters

Left Atrial Geometry  
Creation with 3D  
Mapping Systems



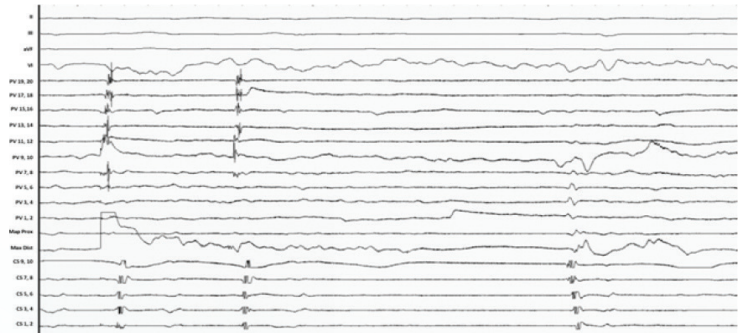
### KEY FEATURES



- > Catheters deflect a full 180 degrees for access to the RIPV
- > Allows for excellent stability at PV
- > Tear drop tip helps prevent the chance for perforations & allows for clockwise and counter clockwise rotation of catheter
- > Superior shaft construction helps maintain stable curve and shaft performance
- > Catheters available in 12mm, 15mm, 18mm, 21mm & 24mm sizes

### CATHETER SPECIFICATIONS

- > **French Size:** 7F
- > **Length:** 110cm
- > **Electrodes:** 10 & 20
- > **Curve Type:** PV Curve

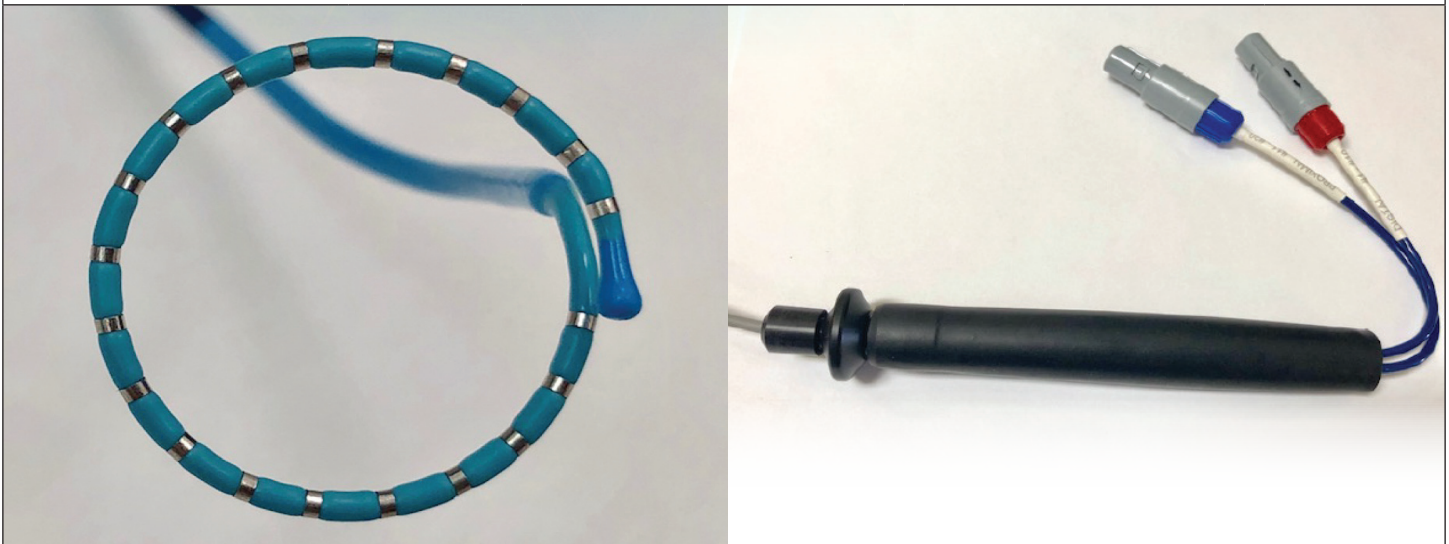


## APT EP MAP-IT® PV DIAGNOSTIC CATHETERS

### APT EP Map-iT® 7F Decapolar PV Electrophysiology Catheter

Reference Number	French	Electrodes	Electrode Spacing (mm)	Ring Electrode (mm)	Curve	Useable Length (cm)
901641	7Fr	10	3-3-3-3-3-3-3-3-3	1	PV12	110
901642	7Fr	10	4-4-4-4-4-4-4-4-4	1	PV15	110
904643	7Fr	10	5-5-5-5-5-5-5-5-5	1	PV18	110
901644	7Fr	10	6-6-6-6-6-6-6-6-6	1	PV21	110
901645	7Fr	10	7-7-7-7-7-7-7-7-7	1	PV24	110

Connection Cable: Reference number 901956



### APT EP Map-iT® 7F Duo-Decapolar PV Electrophysiology Catheter

Reference Number	French	Electrodes	Electrode Spacing (mm)	Ring Electrode (mm)	Curve	Useable Length (cm)
903950	7Fr	20	1.25-1.25-1.25...	0.6	PV12	110
903951	7Fr	20	1.5-1.5-1.5...	0.6	PV15	110
903952	7Fr	20	2-2-2...	0.6	PV18	110
903953	7Fr	20	2.5-2.5-2.5...	0.6	PV21	110
903954	7Fr	20	3-3-3...	0.6	PV24	110

Connection Cable: Reference number 901957 2 cables required