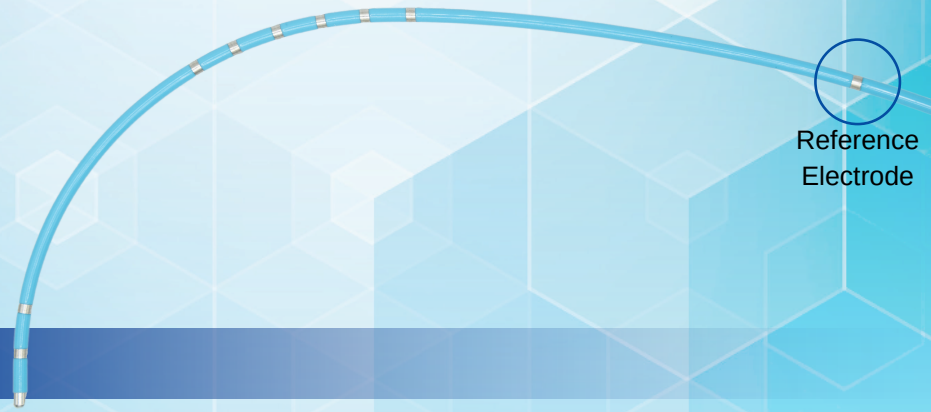


# Map-iT® HV Express<sup>R</sup> Diagnostic Catheters

**Pace the RVA and record retrograde AV node activation with a single catheter**



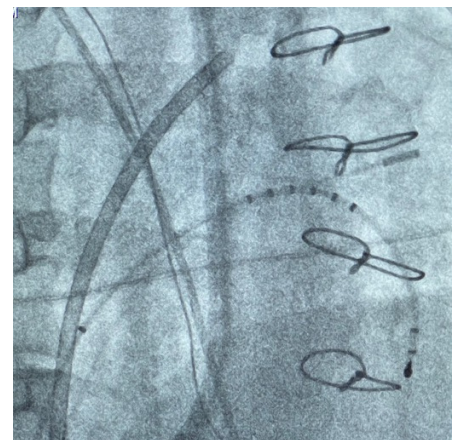
## KEY FEATURES

- > Decapolar catheter with three distal electrodes for the RVA, six for the HIS and one reference electrode on the proximal shaft
- > Simplify procedures: One access point, single catheter insertion for HIS and RV recording
- > Reference Electrode provides stable IEGM throughout procedure
- > Allows for precise sensing of catheter body location during fluoroless mapping procedures
- > Superior shaft construction maintains stable curve and provides consistent shaft performance



## CATHETER SPECIFICATIONS

- > **French Size:** 5F or 6F
- > **Length:** 120cm
- > **Electrodes:** 10: Three distal (RVA) + six proximal (HIS) + one on proximal shaft
- > **Electrode Spacing:** 34mm between HIS and RV, reference 50mm
- > **Curve Type:** MPA



\*Developed in collaboration with Jeffrey Winterfield MD, Charleston, South Carolina\*

- > Reduce catheter manipulation in the RV - potentially reducing risk of HV interval prolongation
- > Effortlessly measure the response of the AH interval to atrial pacing or drugs
- > Assess HPB compared with RVP in terms of improved QRS duration and ventricular activation patterns prior to permanent lead placement

**MAP-IT® HV EXPRESS<sup>R</sup> DIAGNOSTIC CATHETERS**

**5F & 6F Decapolar Fixed Curve Electrophysiology Catheters**

Reference Number	French	Electrodes	Electrode Spacing (mm)	Ring Electrode (mm)	Tip	Curve	Usable Length (cm)
950580	5	10	4-4-34-4-4-4-4-4-50	1	2	MPA	120
950824	6	10	4-4-34-4-4-4-4-4-50	1	2	MPA	120

Connection Cable: Reference number 901957

