



HV EXPRESS™

DIAGNOSTIC CATHETER

Multi-Electrode Catheter for Simultaneous HIS & RV Recording with Stable Reference Electrode



Intentional Electrode Placement

Receive high quality electrogram data from three distal electrodes for the RV, six for the HIS, and one reference electrode on the proximal shaft.



Streamlined Procedure

With a single catheter, pace the RV and record the AV node activation for a more efficient procedure.



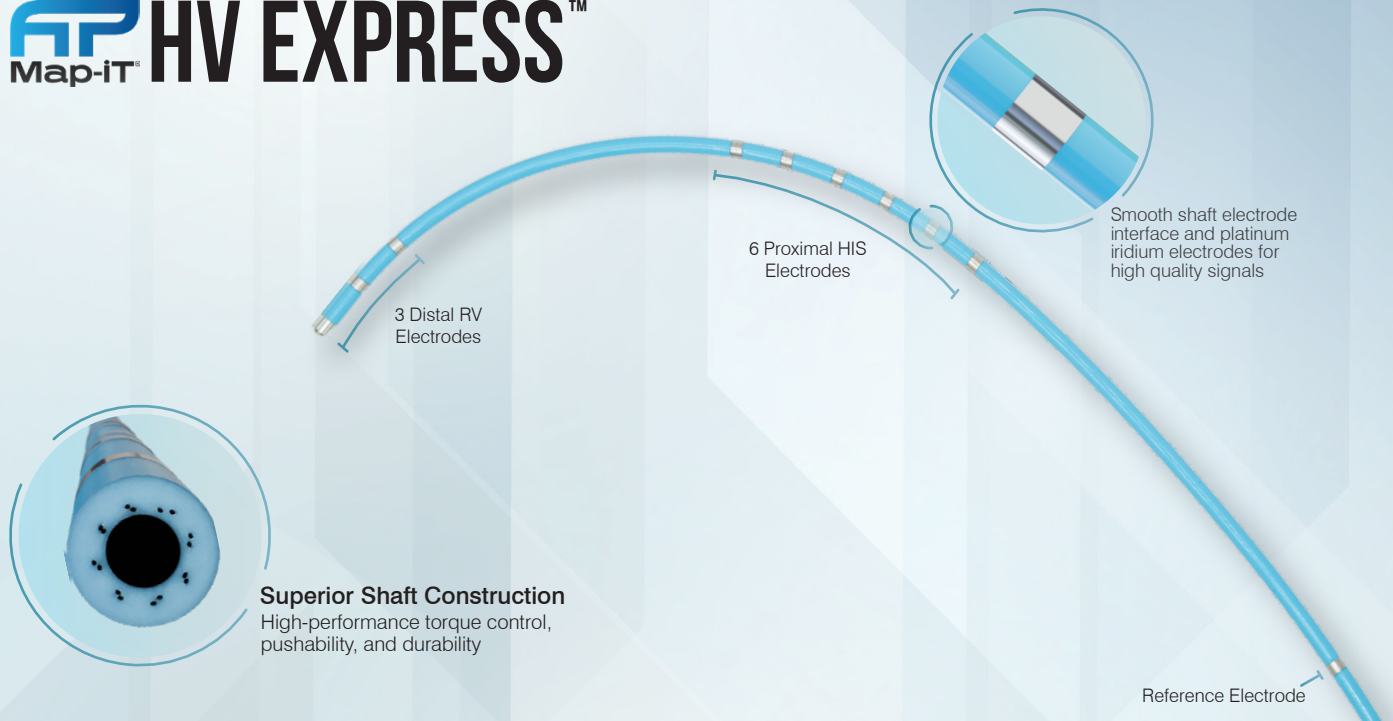
Reference Electrode

Reference electrode enables stable unipolar EGMs, precise sensing of catheter location, and signal stability throughout procedure.

The Map-iT HV Express, also known as the HV Express Catheter, is an enhancement to the existing HIS-RV catheter with the addition of a proximal reference electrode. The catheter allows physicians to use one catheter and a single access point for both HIS and RV recordings, simplifying procedures and potentially reducing the risk of HV interval prolongation. Map-iT catheters are designed with a braid-reinforced shaft for high pushability, easy placement, and consistent handling, even during long procedures.

Specifications

French Size	5F or 6F
Length	120cm
Electrodes	3 Distal, 6 Proximal, 1 Reference
Electrode Spacing	34mm RV to HIS, 50mm to Reference
Curve Type	MPA



Decapolar Fixed Diagnostic Catheter

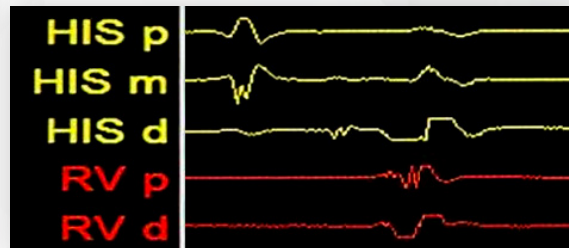
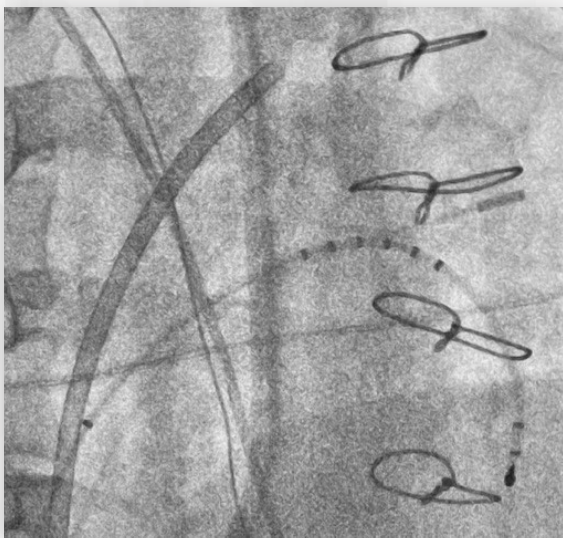
Electrodes	10
Electrode Spacing (mm)	4-4-34-4-4-4-4-4-50
Ring Electrode	1mm
Tip Electrode	2mm
Curve	MPA
Usable Length	120cm

Reference No. French

950580	5
950824	6

Connection Cable Reference No. 901957

Made in the USA



To Order

✉ Map-iT@stereotaxis.com ☎ +1 (763) 432-9004

Follow Us

✕ in EP Map-iT