



# CS NAVIGATOR™

## MAPPING CATHETER

Coronary Sinus Catheter for Deep Vein Mapping



### Active Tip

2F Active Tip electrode provides bipolar signal from most distal anatomy



### High Density Signals

Tight linear electrode spacing allows for precise signal mapping and localization of arrhythmia origin



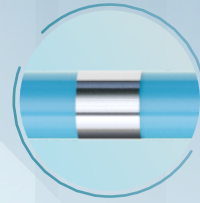
### Extended Reach

Enhanced placement into the smallest of CS vasculature with a 2F active tip and 4F catheter body

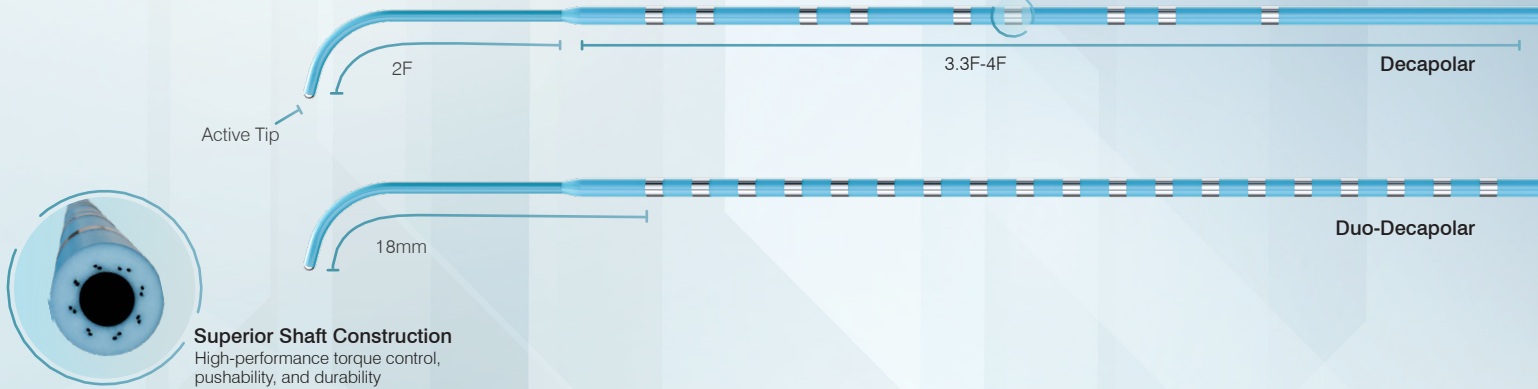
The Map-iT CS Navigator, also known as the CS Navigator Active Tip Diagnostic Catheter, is a fixed curve high density linear mapping catheter with an active tip electrode and diameter tapering to only 2F. It delivers bipolar signals from previously inaccessible areas and, with its narrow electrode spacing, enables reliable localization of the arrhythmia origin. With optimal signals, the CS Navigator ensures precise mapping of the LV summit, side branches, middle cardiac vein, and vein of Marshall. All Map-iT catheters are designed with a braid-reinforced shaft for high pushability, easy placement, and consistent handling, even during long procedures.

## Specifications

French Size	4F-3.3F/2F
Length	120cm
Electrodes	10 or 20
Electrode Spacing	18-2-2-2mm, 18-2-5-2mm
Curve Type	Straight



Smooth shaft electrode interface and platinum iridium electrodes for high quality signals



### 4/3.3F Decapolar Fixed Diagnostic Catheter

French	4F-3.3F/2F
Electrodes	10
Ring Electrode	1mm
Tip Electrode	.66mm
Curve	Straight
Usable Length	120cm

Reference No.	Electrode Spacing (mm)
904222	18-2-2-2
904252	18-2-5-2

Connection Cable Reference No. 901957

Made in the USA

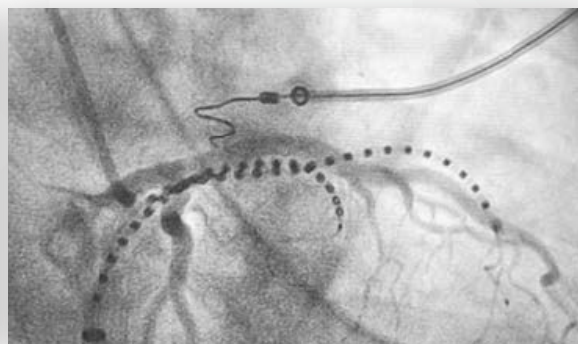
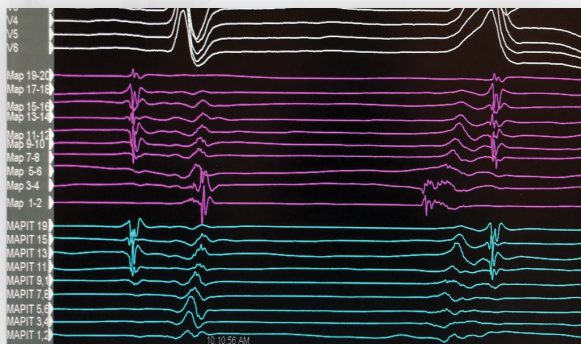
### 4/3.3F Duo-Decapolar Fixed Diagnostic Catheter

French	4F-3.3F/2F
Electrodes	20
Ring Electrode	1mm
Tip Electrode	.66mm
Curve	Straight
Usable Length	120cm

Reference No.	Electrode Spacing (mm)
904220	18-2-2-2
904250	18-2-5-2

Connection Cable Reference No. 901957 - 2 Cables Required

Made in the USA



#### To Order

✉ Map-iT@stereotaxis.com ☎ +1 (763) 432-9004

#### Follow Us

✕ in EP Map-iT