



# HV EXPRESS™

## DIAGNOSTIC CATHETER

Multi-Electrode Catheter for Simultaneous HIS & RV Recording with Stable Reference Electrode



### Intentional Electrode Placement

Receive high quality electrogram data from three distal electrodes for the RV, six for the HIS, and one reference electrode on the proximal shaft.



### Streamlined Procedure

With a single catheter, pace the RV and record the AV node activation for a more efficient procedure.



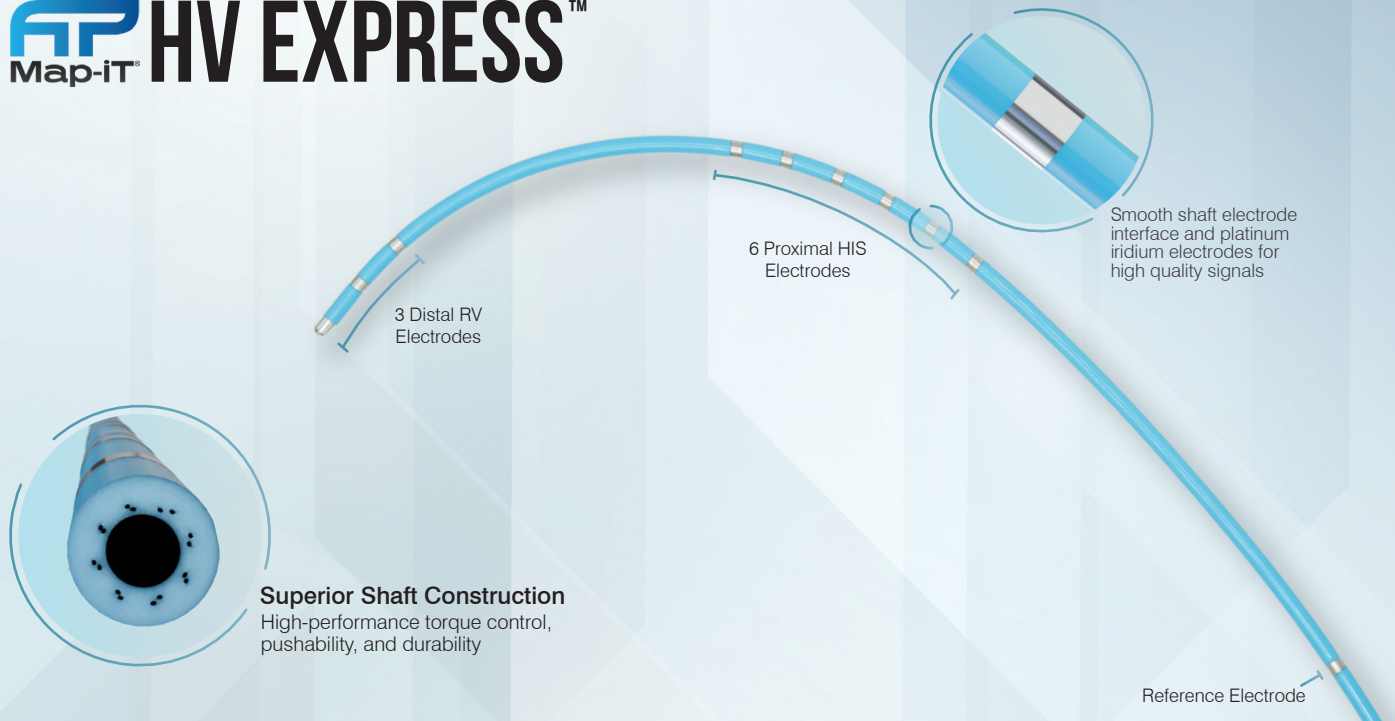
### Reference Electrode

Reference electrode enables stable unipolar EGMs, precise sensing of catheter location, and signal stability throughout procedure.

The Map-iT HV Express, also known as the HV Express Catheter, is an enhancement to the existing HIS-RV catheter with the addition of a proximal reference electrode. The catheter allows physicians to use one catheter and a single access point for both HIS and RV recordings, simplifying procedures and potentially reducing the risk of HV interval prolongation. Map-iT catheters are designed with a braid-reinforced shaft for high pushability, easy placement, and consistent handling, even during long procedures.

## Specifications

French Size	5F or 6F
Length	120cm
Electrodes	3 Distal, 6 Proximal, 1 Reference
Electrode Spacing	34mm RV to HIS, 50mm to Reference
Curve Type	MPA



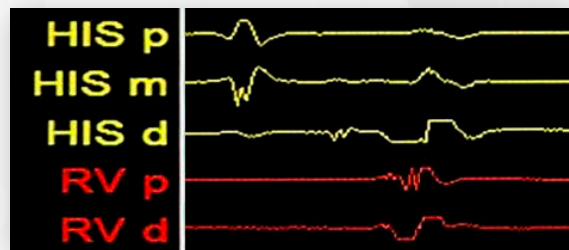
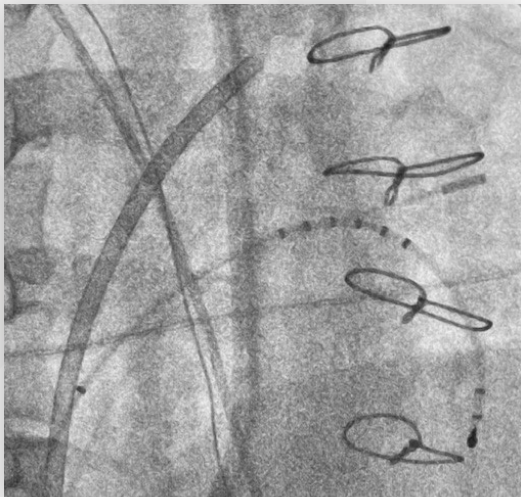
## 5F & 6F Decapolar Fixed Diagnostic Catheter

Electrodes	10
Electrode Spacing (mm)	4-4-34-4-4-4-4-4-50
Ring Electrode	1mm
Tip Electrode	2mm
Curve	MPA
Usable Length	120cm

Reference No.	French
950580	5
950824	6

Connection Cable Reference No. 901957

Made in the USA



### To Order

✉ Map-iT@stereotaxis.com ☎ +1 (763) 432-9004

### Follow Us

✕ in EP Map-iT